

Partnering with your local University

Chad Eller
Park Ranger
W. Kerr Scott Reservoir



®

US Army Corps of Engineers
BUILDING STRONG®



W. Kerr Scott Reservoir

How a small lake created a big partnership



- Wilkesboro NC
- Built in 1961
- 55 miles of shoreline
- 1400 acres of water at normal pool
- 5000 total project acres



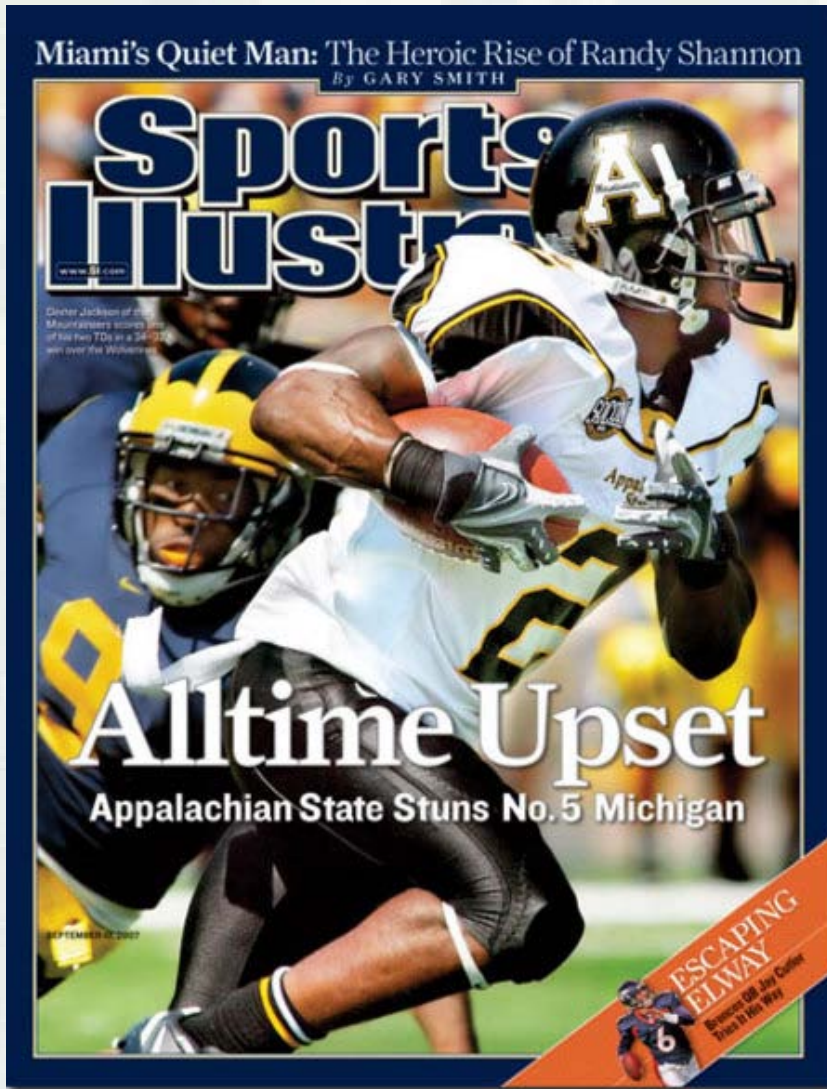
BUILDING STRONG®

W. Kerr Scott Reservoir



- 900,000 visitors annually
- 3 campgrounds
- Hiking/biking
- Hunting/fishing
- Boating/swimming



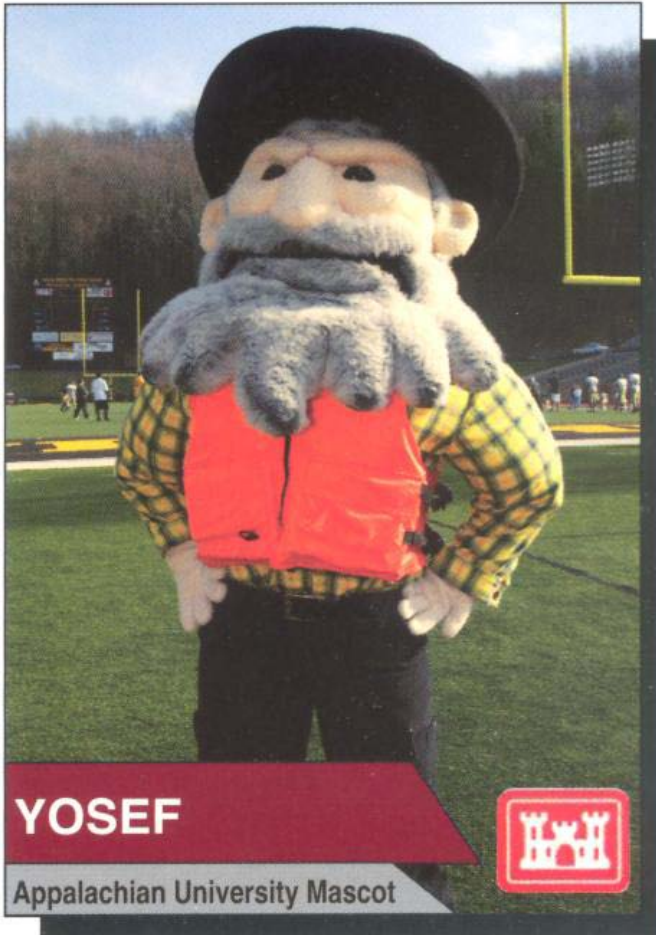


How it all
started...



BUILDING STRONG®

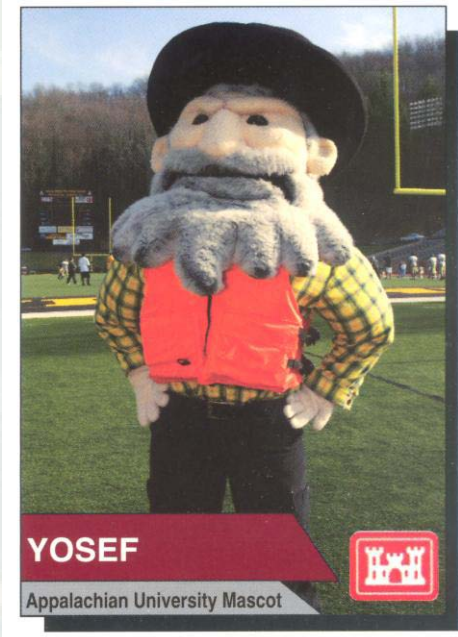
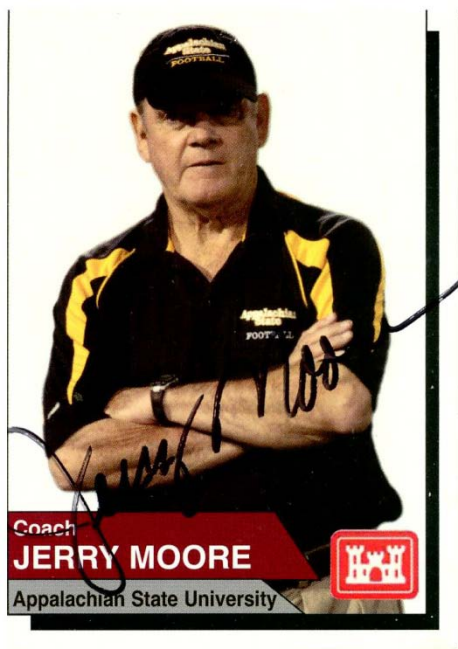
Partner with the Athletic Department



- Athletic Department is an great way to get your foot in the door
- Make initial school commitment easy
- The school simply allowed a ranger to come to a practice to get photos and video.



Water Safety Trading Cards



Popular and cost effective



BUILDING STRONG®

**In-house Youtube
project gets over
17,500 views!!!**



BUILDING STRONG®

Take Advantage of the Image



BUILDING STRONG®

Job/Intern Fairs



- Recruit volunteers
- Educate
- Establish an agency presence



Year #2 Keep the Ball Rolling



Involve your other partners



BUILDING STRONG®

Coloring Contests



Sponsored by...(share the wealth)



FRIENDS OF
W. KERR SCOTT LAKE

499 Reservoir Road • Wilkesboro, NC 28697 (336) 921-3390



BUILDING STRONG®

Judged by ASU Recreation Students



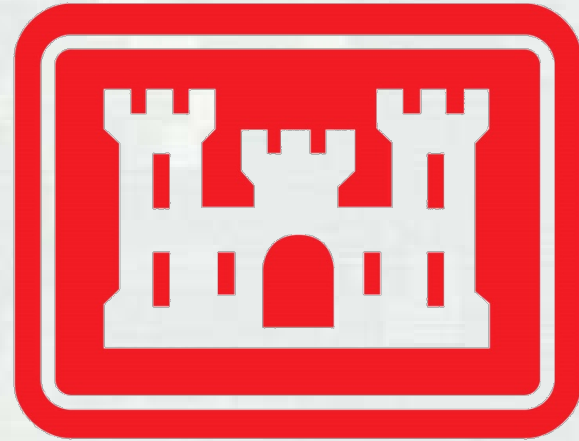
(Be Flexible)



BUILDING STRONG®

Guest Speaker for Intro to Rec Classes

- Educate
- Establish an agency presence
- Recruit



SM



BUILDING STRONG®

The Grand Tour

- Give the faculty a tour of your park
- Brainstorm ways to work together
- Maintain the attitude “Our park is your oyster”



Get Students in your Park

Bird watching = partnership?

NC State biology and computer science department

+ interested citizens

+ Jordan Lake

= EAGLE CAM



This project originated when Army Corps of Engineers biologist, Francis Ferrell, led a class of NCSU ornithology students on a visit to an active Jordan Lake Bald Eagle nest in March 2010.

Our team of volunteer engineers, NCSU graduate students, faculty, and staff formed over the next six months.

We installed video cameras at an active nest in October and began monitoring the breeding pair just before the female laid two eggs in early December.





BUILDING STRONG®

NC STATE UNIVERSITY

Live Video - Bald Eagle Nest at Jordan Lake, NC



Nest is visible dawn to dusk Eastern Standard Time.



BUILDING STRONG®



Work with the event planning class



BUILDING STRONG®



ASU
Students!



BUILDING STRONG®

Share the Wealth



ASU event planning class helping a local Boy Scout camp



BUILDING STRONG®

At W. Kerr Scott Reservoir, the event planning class has organized:

- Take a Kid Fishing Day
- Mountain Bike Clinic
- Fly Fishing Clinic
- Activities for understaffed BSA group



BUILDING STRONG®

Get creative and research the schools existing programs.

How can you work together?



BUILDING STRONG®

Read With a Ranger

(How W. Kerr Scott piggy backed with ASU's summer reading program)

- Present interpretive programs at your local library
- Literacy is a great tool to teach Environmental Education
- Host a book swap event



Volunteer Interns



Jonathan and Jacob





BUILDING STRONG®



BUILDING STRONG®



BUILDING STRONG®



BUILDING STRONG®



BUILDING STRONG®



Jonathan and Jacob performed 400 hours of service at W. Kerr Scott Reservoir and received 12 credit hours from ASU. The MOU was drafted by a park ranger and a recreation department professor.



Keep 'em Coming



BUILDING STRONG®



Jacob arranged for one of his professors, a Lewis and Clark re-enactor, to assist with a Cub Scout day camp.

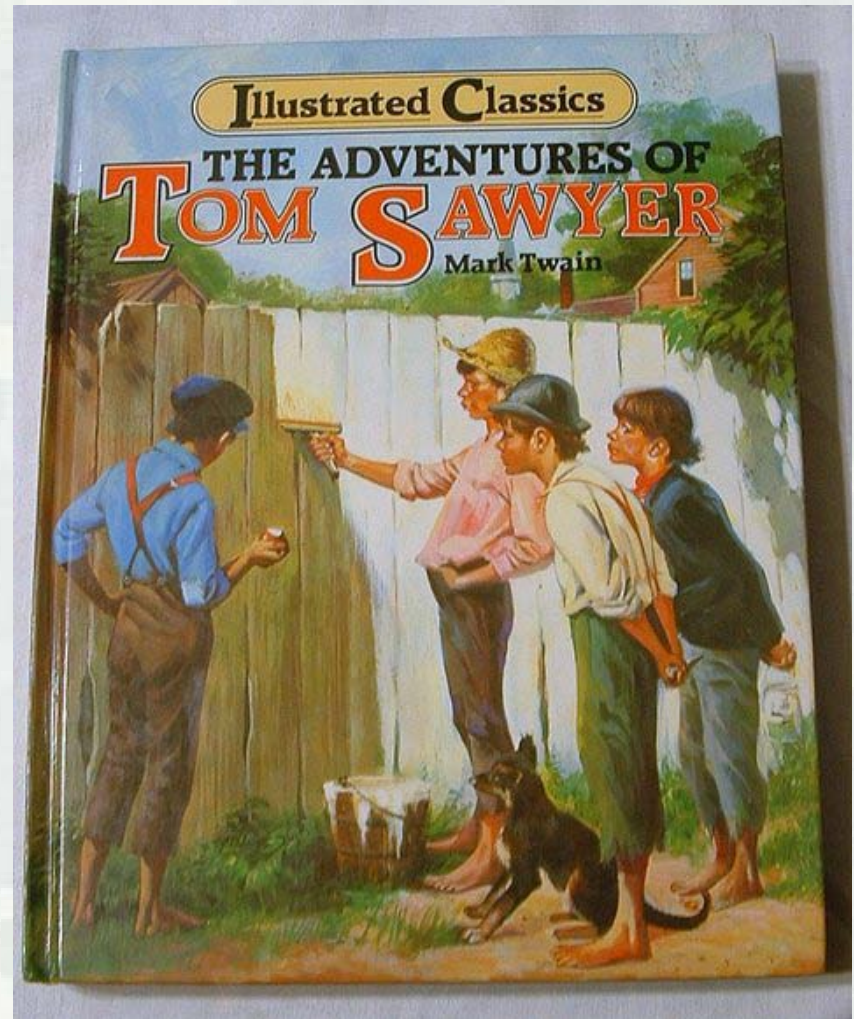


BUILDING STRONG®

Setting the stage for
success

a.k.a.

Getting your fence
painted without asking



BUILDING STRONG®

Don't Give Up!



Two years prior, ASU was unsuccessfully approached.



BUILDING STRONG®